

C942

OKI®



A productive solution for increasing profits
with 5 color specialty applications



White Productivity

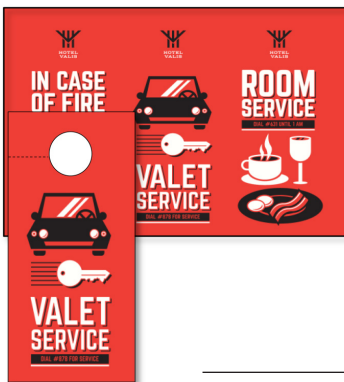
The C942 is the fastest color on color production printer in its class⁵.

Increase clients profit with “White Productivity”

In today's business climate, clients are constantly looking for ways to differentiate themselves and generate new revenue streams. While many print shops resort to discounting work in order to gain business, we at OKI Data understand the challenge and have the solution, the C942 CMYK+White digital printer. Our solution helps clients transform their printing from the regular full color print on white paper to full color on color printing on vibrant colored stocks! It's now possible to offer your clients the ability to mix it up with specialty medias which allow them to stand out from the crowd using the OKI C942 5 Color CMYK +White digital printer.

We've designed the OKI C942 digital printer to meet these demands with great production ease. Produce high quality image output, at up to 45ppm in a single pass. And with our enhanced white toner your images will visually jump off the page and wow your most critical client. Intrinsic in our design is our small footprint, ease of use and ability to quickly and easily carry out maintenance tasks to ensure only the most consistent high image quality prints are produced. The OKI C942 has the flexibility to quickly turn around unexpected work allowing clients to meet deadlines. Whether your client is looking to meet a specific need or transform their business, the OKI C942 is the ideal solution.

Examples of the C942's unique print capabilities:



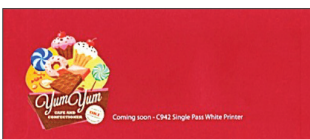
Eye Popping Polyester Door Hangers
– Using White toner to give powerful emphasis to text and graphics making for a unique application.

Wood Veneer – White toner under CMYK on wood veneer makes colors pop!



Retail Signage – Print CMYK over white toner on clear polyester window cling media.

Greeting Cards & Invitations – Print color on color on a wide variety of dark colored card stocks. Print on letter size sheets, trim and fold to a 5" x 7" card.



Envelopes – Print color on color and produce brilliant full color images on colored envelope media.



Industry Leading HD Color Quality from OKI Data



C942 Features:

- Up to 50ppm Mono/Color for CMYK Jobs
- Up to 45ppm CMYK over White
- 1200 dpi LED Printheads
- Duplex Standard
- White Under CMYK in a Single Pass
- Easily Print Full Color on Dark Media
- Trapping Included on C942 Postscript Driver
- New White Toner with Increased Density
- Increased White Toner Capacity to 15K
- White Spot Color Ships with Printer
- Robust Media Capabilities – Up to 360gsm
- External RIP Options Available
- PC and MAC OS PS Print Drivers

HD Color Printing Technology

HD™ High definition color is the standard for the C900 Series. HD Color renders deeper, more saturated colors, finer detail and more precise toner placement than ordinary color printers. This unique four-part process includes:

Multilevel LED Printheads that control the amount of toner applied to each 1200 dpi dot, preserving fine image detail and maximizing color fidelity.

Microfine Toner engineered to ensure that printed documents are sharp and crisp, with a high-quality finish.

Single Pass Color Technology enhanced to improve color registration, regardless of paper type and weight, and provides better toner transfer across a wider range of media types.

Printer control system automatically adjusts for sharp, clear images every time; color checking and matching deliver professional photo-like quality.

EFI Fiery FS150 Server



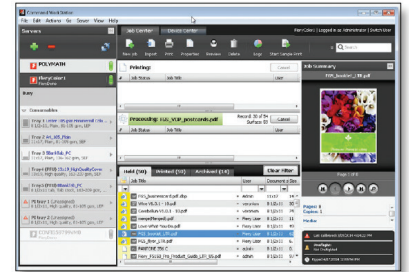
To succeed in today's competitive environment, you need to offer your customers more services, while increasing operational efficiency for higher profitability. To achieve both requires the processing power and capability of an EFI Fiery.

The Fiery® FS150 Pro system is the most innovative, scalable and integrated digital front end for digital print engines, ensuring that customers receive the highest return on their investment. The new features provide substantial gains in productivity, deliver accurate and amazing color, include impressive improvements in ease of use, and enhance integration that will help commercial and digital printers reduce costs and improve service.

Fiery Command Workstation 5

The award-winning Fiery Command Workstation®, the powerful, intuitive job management interface, lets users:

- Manage C942 Fiery Driven printer locally or remotely from Mac OS or Microsoft® Windows® clients
- Achieve complex tasks with fewer clicks
- Visual, easy-to-use tools
- Increase efficiency and reduce errors with server-based automated work-flows that are easy to set up and use throughout a print facility to improve color registration, regardless of paper type and weight, and provides better toner transfer across a wider range of media types.



Fiery Command WorkStation – Fiery Command WorkStation can manage C942 and other OKI Fiery Driven printers locally or remotely from Mac or Windows clients.



Intuitive Operation – Operators have tools at their fingertips, and use fewer clicks to access advanced settings or features.



C942

Specifications

Performance		
Print Speed ¹	Color/Mono	Up to 50 ppm Letter, 27 ppm Tabloid
Time to First Page ¹	CMYK/Mono	Approx. 8 seconds
Duty Cycle	Max Per Month	300,000 pages
Print Quality	Resolution	Up to 1200 x 1200 dpi; ProQ 1200 x 600 x 16 levels
Memory	RAM (Standard/Max)	2 GB
	Processor	1.2 GHz ARM CPU
Compatibility	Printer Languages	Adobe® PostScript® 3TM, PCL® 6, PCL 5c, XPS®
	Connectivity	Print Speed ¹
	Operating Systems	Windows® and 8.1 support, Windows Vista®, Windows Server 2012, Windows Server 2008, Windows Server 2008 R2; Mac® OS 10.3.9 – 10.10
	Network Protocols	TCP/IP, EtherTalk
Color Features/ Solutions		Optional external PC-based RIP: Global Graphics® Harlequin® MultiRIP™ 10, EFI® XF Server or EFI® Fiery FS150 Pro
		Standard Adobe PostScript 3 controller includes Trapping, ICC-based Color Management, Simulations for SWOP, ISO Coated, Japan Color; PDF Direct Print; PS Gamma Adjust; Color Correct
Print Management		Print Job Accounting; PrintSuperVision 4.0
Media Handling	Media Sizes	Tabloid extra (12" x 18"), tabloid (11" x 17"), legal, letter, executive, 3" x 5" index cards, A3, A4, A5, A6, B5, C5, DL, Com 10, Monarch envelopes, and banners (up to 13" x 52")
	Media Weight	Trays 1/2/3 and High-Capacity Feeder: 52–320 gsm; Multi-purpose Tray: 52–360 gsm
Media Capacity	Multi-purpose Tray (MPT)	Up to 300 sheets
	Trays 1/2/3	Up to 530 sheets
	High-Capacity Feeder	Up to 1,590 sheets
Max Capacity		Up to 2,950 sheets (w/ MPT, 2 Trays and High-Capacity Feeder)
Media Output		Face Down: max 610 sheets; Face Up: max 300 sheets
Environmental	Size (WxDxH)	27.5" x 24.6" x 25.2" (699 mm x 625 mm x 640mm)
	Weight	244 lb. (110.8kg) including consumables
	Temperature/Humidity	50°– 90° F (10° – 32°C) / 20% – 80%RH
	Power Consumption	Active: 1600W max. /1100W avg.; Standby: avg. 40W; PowerSave mode: 30W or less; Sleep mode: 4W or less; Auto Shutoff: 0.4W or less
	Noise Levels	Active: 57dBA or less; Standby: 34dBA or less; PowerSave mode: Inaudible
	ENERGY STAR® Compliance	Yes
Options	Accessory (Part Number)	530-Sheet 2nd/3rd Tray (45530702); High-Capacity Feeder w/ caster base (45530802); 530-Sheet Tray w/ Caster Base (45530902); Cabinet (70065701); 160 GB Hard Disk Drive (44622302); Harlequin MultiRIP 10 (70066201); EFI XF Server (45592302); EFI Fiery FS150 Pro (Part# TBD)
Warranty	Limited	1-Year On-Site ³ ; 5-Year Digital LED Printheads

Ordering Information

Product	Description	Part Number
C942	5 – Station Digital LED	62446401
Toner: CMK	38,000 pages ²	Cyan – 45536515; Magenta – 45536514; Black – 45536516
Toner: Yellow	24,000 pages ²	Yellow – 45536438
Toner: White	15,000 pages ²	White – 45536542
Image Drum: CMK	40,000 pages ⁴	Cyan – 45103727; Magenta – 45103726; Black – 45103728
Image Drum: Yellow	40,000 pages ⁴	Yellow – 45103725
Image Drum: White	20,000 pages ⁴	White – 45103764
Waste Toner Box	Approx. 40,000 pages ⁴	45531502
Fuser	Approx. 150,000 pages	45531112
Transfer Belt	Approx. 150,000 pages	45531222

¹ Published performance results based on laboratory testing of letter-size sheets, simplex. Individual results may vary.

² Based on ISO/IEC 19798

³ White toner yield based on 5% coverage of letter-size sheet, simplex.

⁴ Available in the U.S. and Canada only.

⁵ Estimated life based on 3 pages per job.

(single sided letter-size long edge feed)

⁵ Fastest CMYK+White digital toner based printer in the 40 ppm - 50 ppm category.

Specifications are subject to change without notice.

© 2015 Oki Data Americas, Inc. OKI Reg. T.M., M.D., Oki Electric Industry Co., Ltd. Single Pass Color T.M., Oki Data Corp. PANTONE Reg. T.M., Pantone Inc. Harlequin Reg. T.M., Harlequin mark, MultiRIP T.M., Global Graphics Software Ltd. EFI, Fiery Reg. T.M., EFI, Inc. Adobe, PostScript Reg. T.M., PostScript 3 T.M., Adobe Systems, Inc. PCL Reg. T.M., Hewlett-Packard Co. Windows, Windows Vista Reg. T.M., Microsoft Corp. XPS Reg. T.M., Dell, Inc. Mac Reg T.M., Apple Inc. ENERGY STAR Reg. T.M., Reg. T.M., US EPA.



OKI DATA AMERICAS, INC.

USA

2000 BISHOPS GATE BLVD.
MOUNT LAUREL, NJ 08054-4620
TEL: 800.OKI.DATA (800.654.3282)
FAX: 856.222.5320

WWW.OKIDATA.COM

CANADA

4140B SLADEVIEW CRESCENT
UNITS 7 & 8
MISSISSAUGA, ONTARIO L5L 6A1
TEL: 905.608.5000
FAX: 905.608.5040