



KONICA MINOLTA



**bizhub 20/20P:**  
essential elements in your total document solution.

YOUR BUSINESS RUNS ON INFORMATION – AND YOU CAN COUNT ON KONICA MINOLTA FOR A RIGHT-SIZE DOCUMENT STRATEGY TO SAVE TIME AND MONEY AS IT SPEEDS YOUR WORKFLOW. THE BIZHUB® 20 IS AN ALL-IN-ONE (AIO) SOLUTION THAT PUTS REAL POWER ON YOUR DESKTOP – UP TO 32 PPM IN HIGH-QUALITY B&W, WITH COLOR SCANNING, BUILT-IN FAX AND MORE. THE BIZHUB 20P IS A 32 PPM DESKTOP PRINTER TO REPLACE LEGACY PRINTERS THAT CAN'T KEEP UP WITH YOUR WORKLOAD. BOTH MODELS CAN BE ESSENTIAL TO YOUR TOTAL DOCUMENT SOLUTION – WITH BUILT-IN PRINT CONTROL, CROSS PLATFORM VERSATILITY, ENHANCED SECURITY AND PAGESCOPE® NETWORKING POWER.



**bizhub 20**

COUNT ON KONICA MINOLTA  
bizhub 20/20P

# **bizhub 20/20P:** speed, quality and cost-efficiency.



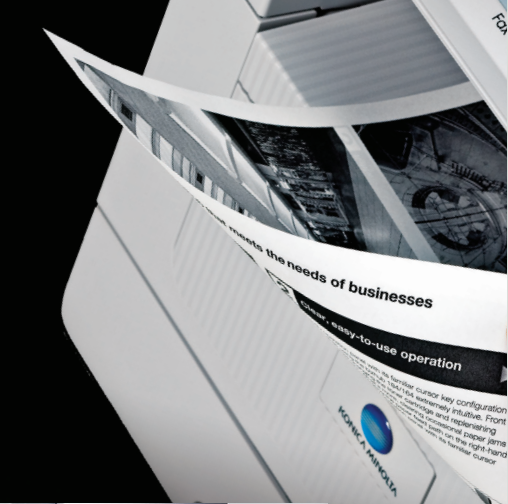
## **Faster and more cost-effective B&W printing.**

The bizhub 20/20P meet the desktop demands of workgroups, branch locations, public-access areas, even small to mid-size businesses – any information environment coping with increased document traffic.

High-speed 32 ppm output and rugged reliability give you superior performance in space-saving compact design. Built-in print control provides PCL6 and PostScript 3 emulation for immediate productivity in Windows and Macintosh environments. Print resolution up to 2400 x 600 dpi gives both text and graphics greater detail – and fast warm-up of 18 seconds or less with lightning-fast first print output in 8.5 seconds can eliminate long waits at the printer.

With a toner yield up to 8,000 pages, the bizhub 20/20P can achieve significant savings over other desktop laser printers. You can save energy costs by eliminating underused and inefficient legacy equipment. Both models print on paper up to 8.5" x 11" letter and 8.5" x 14" legal, the sizes you use most often. And standard duplexing lets you save even more by doing 2-sided printing.

Loading more paper helps you keep work flowing. With standard 250-sheet cassette, 50-sheet multipurpose tray and two optional 250-sheet paper trays, the bizhub 20P has maximum paper capacity of 800 sheets – and allows you to load four different paper types at once, for quick printing on letter and legal sizes as well as letterhead and specialty papers.



### Total AIO print/copy/scan/fax productivity.

In addition to print/copy output up to 32 ppm, the bizhub 20 expands your productivity with built-in scanning and high-speed fax – but don't confuse it with ordinary all-in-ones that can't provide the productivity you need.

Built-in color scanning lets you share documents more easily, with versatile Scan-to-Email, Scan-to-FTP and Scan-to-SMB for sharing files anywhere on your information network, including remote locations. A standard 50-sheet reversing auto document feeder enables you to bring information into your system faster.

Using a convenient front-panel USB host connector, you can print from and scan to USB flash memory drives in a wide range of file formats: PDF, Secure PDF, JPEG, TIFF and XPS.

A high-speed built-in Super G3 fax puts total input/output power at your fingertips, with both Internet faxing and PC-faxing to send information to destination quickly and easily. And a control panel with dedicated function keys makes everything simple.

### Security, software and environmental protection.

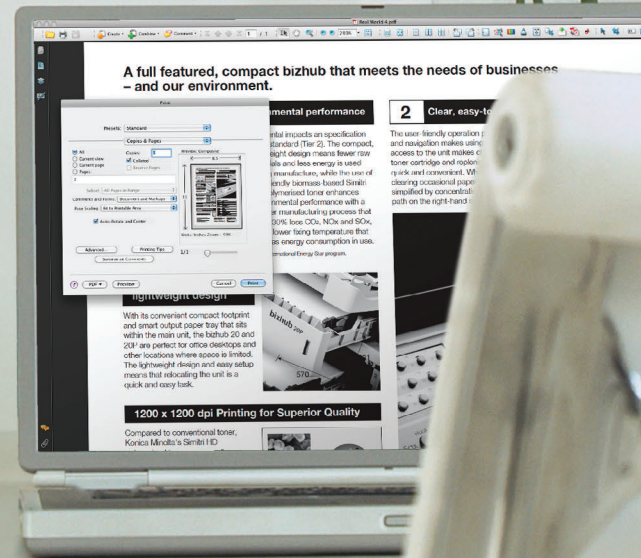
To safeguard all your data, the bizhub 20 provides security protection with user authentication you can set for individual functions: PC Print, USB Direct Print, Scan, Copy, and Fax. Individual users can be authorized for one or more functions.

Along with the networking power of fast 10/100Base-TX Ethernet and IEEE1284 Parallel connectors, the bizhub 20/20P allow you to interface with powerful Konica Minolta PageScope software programs that work together – enabling IT administrators to manage their entire fleet of bizhub devices from a centralized location.

The bizhub 20 is also amazingly simple to use, increasing your print/scan productivity with bundled software like PaperPort II and ControlCenter3. And to protect the environment, both models incorporate green technologies – lower power consumption, energy-saving operating modes, and consumables designed for easy recycling.

With speed, quality and reliable performance, the bizhub 20/20P are essential to the productivity and cost-efficiency of a total document solution – the kind you can count on from Konica Minolta.

**Eco Vision 2050** is Konica Minolta's commitment to protect the environment – saving energy, preserving resources, promoting recycling and reducing CO<sub>2</sub> emissions by 20% in 2015 – and ultimately by 80% in 2050, to help sustain the environment for generations to come. Please visit our website to learn more about our environmental initiatives and our exclusive **Clean Planet Program**.  
[www.countonkonicaminolta.com](http://www.countonkonicaminolta.com)



# bizhub 20/20P

bizhub 20



printer/copier/scanner/fax

bizhub 20P



monochrome printer

SPECIFICATIONS		
Print / Copy Speed (Letter, portrait)		32 ppm
Monthly Duty Cycle (pages)		30,000
Print Method		Electrophotographic Laser
COPY		
Display		5-line, 22 character white back-lit LCD
ADF		50 page Auto Reverse
Warm-up Time / First Copy Time		Approx. 18 seconds / 10.5 seconds or less
Copy Resolution / Multiple Copies		Max. 1,200 x 600 dpi / 1 - 99
Copy Features		Duplex (1-sided → 2-sided, 2-sided → 2-sided, 2-sided → 1-sided), Advanced Duplex (2-sided → 1-sided, 1-sided → 2-sided), Contrast/Brightness Adjustment +/-5, Enlarge/Reduce [Auto, Preset, Custom (25-400% in 1% increments)], Quality (Auto, Text, Photo), Sort, N-in-1 [2-in-1 (P), 2-in-1 (L), 4-in-1 (P), 4-in-1 (L)]
COLOR SCAN		
Scan Speed	Color: Up to 8 opm; Monochrome: Up to 20 opm (speeds vary based on resolution and data size)	
Scan Resolution	Up to 19,200 x 19,200 dpi (interpolated); From Scanner Glass: Up to 600 x 2400 dpi (optical); From ADF: Up to 600 x 1200 dpi (optical)	
Grayscale Gradations / Color Depth	256 gradations / 24-bit	
Scan Bed (Platen) Size	Up to 8.5" x 14"	
Scan File Formats	PDF, Secure PDF, JPEG, TIFF, XPS	
Scan Features	Color Scanning, Duplex, Scan-to-Email, Scan-to-USB, Scan-to-FTP, Scan-to-Network (SMB)	
Scan Drivers	TWAIN and WIA (WIA compliant w/Windows XP/Windows Vista/Windows 7)	
Scan Utilities	ScanSoft PaperPort 11SE, ControlCenter3 (Windows), ControlCenter2 (Mac)	
FAX		
Fax Transmission Speed	33.6 Kbps Super G3	
Fax Resolution	Horiz.: 8 dot/mm; Vert.: Standard 3.85 line/mm, Fine/Photo 7.7 line/mm, Superfine 15.4 line/mm	
Compression	MH/MR/MMR/JBIG	
Polling Types	Standard, Secure, Timer, Sequential	
Contrast Control	Automatic / Light / Dark (manual setting)	
Fax Features	Duplex Fax Receive, One Touch Dial (up to 40), Speed Dial (300 stations), Groups (up to 20), Automatic Redial, Ring Delay, Memory Transmission (up to 600 pages), Internet Fax, PC-Fax	
PRINT		
Warm-up Time / First Print Time		Approx. 18 seconds / 8.5 seconds or less
Processor / Speed		NEC VR5500 / 300MHz
Memory (Std./Max.)	64MB / 576MB (shared print, copy, scan and fax memory)	32MB / 544MB
Print Resolution / Grayscale Gradations		300 x 300 dpi / 600 x 600 dpi / 1,200 x 1,200 dpi / 2,400 x 600 dpi / 256 Gradations
Interface		Fast Ethernet 10/100BASE-TX, Hi-Speed USB 2.0, IEEE1284 Parallel Port, USB Host Port (bizhub 20 only)
Page Description Language		PCL6, PostScript 3 Emulation
Print Features		Collate, Quality Settings (General, Graphics, Office Document, Text, Manual), Multiple Page (Normal, 2-in-1, 4-in-1, 9-in-1, 16-in-1, 25-in-1, 1-in-2 x2 pages, 1-in-3 x3 pages, 1-in-4 x4 pages, 1-in-5 x5 pages), Duplex, Booklet, Binding Offset, Scaling (Fit to paper, Enlarge/Reduce 25-400% in 1% increments), Reverse Print, Watermark, Header-Footer, Secure Print (bizhub 20 only), Macro Function (Overlay), Density Adjustment, Toner Save Mode, Status Monitor
MEDIA HANDLING		
Paper Tray	Paper Type: Plain paper, Bond paper, Transparencies, Thin paper or Recycled paper; Paper Size: Letter, Legal, A4, B5 (ISO), A5, A5 (Long Edge), B6 (ISO), A6 and Executive; Paper Weight: 16 - 28 lb bond (60 - 105 g/m <sup>2</sup> ); Maximum Paper Tray Capacity: Up to 250 sheets of 80 g/m <sup>2</sup> Plain paper	
Multipurpose tray (MP tray)	Paper Type: Thin paper, Plain paper, Thick paper, Bond paper, Transparencies, Recycled paper, Envelopes or Labels; Paper Size: Width: 2.75" - 8.5" Length: 4.57" - 16"; Paper Weight: 16 - 43 lb bond (60 - 163 g/m <sup>2</sup> ); Maximum Paper Tray Capacity: Up to 50 sheets of 80 g/m <sup>2</sup> Plain paper, Up to 3 envelopes	
Optional Tray	Paper Type: Plain paper, Bond paper, Transparencies, Thin paper or Recycled paper; Paper Size: Letter, Legal, A4, B5 (ISO), A5, A5 (Long Edge), B6 (ISO), A6 and Executive; Paper Weight: 16 - 28 lb bond (60 - 105 g/m <sup>2</sup> ); Maximum Paper Tray Capacity: Up to 250 sheets of 80 g/m <sup>2</sup> Plain paper	
Duplex	Paper Weight: 16 - 28 lb bond (60 - 105 g/m <sup>2</sup> )	
Paper Output Trays	Standard: 150-sheet face-down output tray, 1-sheet face-up back output tray	
NETWORK PROTOCOLS		
TCP/IP IPv4 Supported Protocols	ARP, PARP, BOOTP, DHCP, APIPA (Auto IP), WINS/NetBIOS name resolution, DNS Resolver, mDNS, LLNMR responder, LPR/LPD, Custom Raw Port/Port9100, IPP/IPPS, FTP Server, TELNET Server, HTTP/HTTPS Server, SSL/TLS, TFTP Client and Server, SMTP Client, APOP, POP before SMTP, SMTP AUTH, SNMPv1/v2c/v3, ICMP, LLTD responder, Web Services Print, IFS Client*, SNMP*, LDAP*, POP3/SMTP*, FTP Client*	
TCP/IP IPv6 Supported Protocols	NDP, RA, DNS resolver, mDNS, LLNMR responder, LPR/LPD, Custom Raw Port/Port9100, IPP/IPPS, FTP Server, TELNET Server, HTTP/HTTPS Server, SSL/TLS, TFTP Client and Server, SMTP Client, APOP, POP before SMTP, SMTP AUTH, SNMPv1/v2c/v3, ICMPv6, LLTD responder, Web Services Print, CIFS Client*, SNMP*, LDAP*, POP3/SMTP*, FTP Client*	
OPERATING SYSTEM COMPATABILITY		
Windows	Windows 2000 Professional, Windows XP Home, Windows XP Professional (x32/x64), Windows Vista, Windows 7, Windows Server 2003 (x32/x64), Windows Server 2008 (R1/R2)	
Mac	OS X 10.3.9 or greater	
SECURITY		
Security Functions	Secure Function Lock (copy/print/scan/fax/USB Direct Print restriction), Secure Print, IP filtering (IPv4), NTLmV3 Authentication (MD5) for MIB, SSL protocol, SNMPv3	IP filtering (IPv4), SSL protocol, SNMPv3
APPLICATION SOFTWARE		
Network and Device Management	PageScope Net Care Device Manager, BRAdmin Light, Web Based Management	
User Tools	ScanSoft PaperPort 11SE, ControlCenter3 (Windows), ControlCenter2 (Mac), Status Monitor	Status Monitor
ENVIRONMENTAL		
Temperature / Humidity	Operating: 50°F to 90.5°F / 20 to 80% (without condensation)	
Noise Levels	Operating (Copying): < 56 dB, Standby: < 30 dB, Printing: < 52.6 dB	Standby: < 21.4 dB, Printing: < 52.6 dB
POWER & DIMENSIONS		
Power Requirements	AC 110 - 120V 50/60Hz	
Consumption	Peak: 1080 W, Copying: Avg. 680 W, Sleep: Avg. 18 W, Standby: Avg. 85 W	Printing: Average 675 W, Standby: Average 75 W, Sleep: Average 6 W
Dimensions (W x D x H) / Weight	20.9" x 17.8" x 18.7" / Approx. 41 lbs	14.6" x 15.1" x 9.7" / Approx. 20.9 lbs
CONSUMABLES		
TNP24 Black Toner	Approx. 8,000 A4 / Letter pages**	
DR-P01 Drum Unit	Approx. 25,000 A4 / Letter pages	
WARRANTY		
Printer Warranty	1-Year	

\*bizhub 20 only \*\*Approx. cartridge yield is declared in accordance with ISO/IEC 19752



KONICA MINOLTA

KONICA MINOLTA BUSINESS SOLUTIONS U.S.A., INC.  
100 Williams Drive  
Ramsey, NJ 07446  
[www.CountOnKonicaMinolta.com](http://www.CountOnKonicaMinolta.com)  
[www.kmbs.konicaminolta.us](http://www.kmbs.konicaminolta.us)

Konica Minolta Optimized Print Services offers a full suite of device output services and workflow solutions that increase efficiency and control costs. Please contact your authorized Konica Minolta sales representative for details.

© 2010 KONICA MINOLTA BUSINESS SOLUTIONS U.S.A., INC. All rights reserved. Reproduction in whole or in part without written permission is prohibited. Konica Minolta is a trademark of KONICA MINOLTA HOLDINGS, INC. bizhub and PageScope are registered trademarks of KONICA MINOLTA BUSINESS TECHNOLOGIES, INC. All other brands and product names are registered trademarks or trademarks of their respective owners.

COUNT ON KONICAMINOLTA



Item #: 20BRO  
9/21/11